



WELCOME TO THE SNOWFLAKE COMMUNITY!

To get started, go to community.snowflake.com
and click...

JOIN THE COMMUNITY



REGISTRATION (ALL USERS)

First Name

Last Name


Nickname

Country
Afghanistan

Email

Confirm Email

I Accept the Terms of Service

I'm not a robot 
reCAPTCHA
Privacy - Terms

SUBMIT

Already Registered ? Go to [Login](#)

Trouble Registering? Email community@snowflake.com

Register as a Community Member

Once you've completed this step, look for an email with information on how to create a password for your account. Your username for login purposes will always be your email address.

Please note that Snowflake account credentials are separate from the Community, and that each user must have a unique Community login.



CHANGE YOUR PASSWORD

New Password

Verify New Password

CHANGE PASSWORD

Set Your Password

After you've chosen a secure password, you'll be taken back to the login page. Login to your new Snowflake Community account!





EDIT



CANCEL Edit User **SAVE**

About

* Nickname

Active

About Me

Title


Last Login
3/26/2020 1:01 AM

Company Name

CANCEL Update Photo **SAVE**

You can upload a JPG, GIF or PNG file. Maximum file size is 16 MB.

Current Photo:



Show my photo on publicly accessible pages

Build Your Profile

When you're logged in, click the user icon in the top right corner and navigate to 'My Profile'. From here you can click edit to update your nickname, add a bio, and update your profile photo.



Select the Type

AWS

Release + Pending Behavior Changes	Product News
AP-Singapore <input checked="" type="checkbox"/>	<input checked="" type="checkbox"/>
AP-Northeast-1 <input checked="" type="checkbox"/>	<input checked="" type="checkbox"/>
EU-Dublin <input checked="" type="checkbox"/>	<input checked="" type="checkbox"/>
East-US-2 <input checked="" type="checkbox"/>	<input checked="" type="checkbox"/>
US-East <input checked="" type="checkbox"/>	<input checked="" type="checkbox"/>
AP-Sydney <input checked="" type="checkbox"/>	<input checked="" type="checkbox"/>
EU-Frankfurt <input checked="" type="checkbox"/>	<input checked="" type="checkbox"/>
US-West <input checked="" type="checkbox"/>	<input checked="" type="checkbox"/>
Canada-Central <input checked="" type="checkbox"/>	<input checked="" type="checkbox"/>

SAVE

Set Your Notification Preferences

You can subscribe/unsubscribe to notification types and control the channel to receive specific notifications. To receive Service Alerts, please subscribe to status.snowflake.com.





LODGE
COMMUNITY



COMMUNITY NEWSLETTER

All Lodge Community updates in a breeze!

JUNE 2019

This June we launched a number of user-requested product features, announced upcoming platform changes, and hosted our very first user Summit. Take a minute to explore new announcements, dive into Snowflake's expanded technical functionality, and share your top questions inside the Lodge.

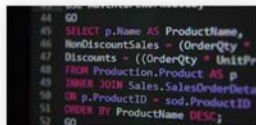
ANNOUNCEMENTS & HIGHLIGHTS



Materialized Views Now Available

Materialized Views are now enabled by default for all accounts! Materialized Views are designed to improve query performance for workloads composed of common, repeated query patterns.

[Learn More »](#)



New SQL Functionality

[CONNECT BY](#), [Recursive CTE](#), and [COLLATIONS](#) are now available by default for all accounts on Snowflake! These expanded SQL capabilities allow users to set rules around data sorting and comparisons while also managing hierarchical data with new query syntaxes.

[Learn More »](#)

Look for the Monthly Community Newsletter!

Get a monthly summary of all product and community announcements, as well as featured technical content from the community. You can manage your email subscriptions under your account settings.



WHAT CAN YOU FIND IN THE COMMUNITY?



Q&A Forum

Join experts on StackOverflow to ask questions, discuss projects, and help each other.



User Groups

Located in cities around the world, user groups bring data professionals together to share best practices and network.



Documentation

Access the latest blogs, tutorials, and product documentation to get the most out of Snowflake.



Support

Need to contact Support? Submit a new case using your Snowflake Community account.



Education & Certification

Join our instructor-led, virtual hands-on labs or get SnowPro certified and stand out in the data community.

Q&A FORUM

Open community for anyone that codes to get answers to tough coding questions



Q&A FORUM

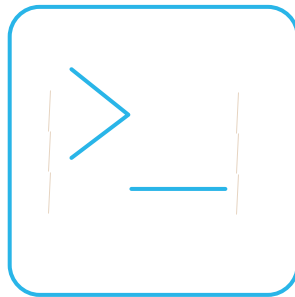
Search for Common Questions



Stack Overflow has thousands of Snowflake questions and answers.

Use the community search and [Stack Overflow's Search](#) to find your answer quickly!

Submit Your Own Questions



Have a question that no one else has asked?

Submit your own questions to the forum and get quality answers from other users.

Get a Response in 24 Hours!



Community moderators monitor the forum 24/7.

You will get the first response is less than 24 hours!



SNOWFLAKE COMMUNITY

Join our community of data professionals to learn, share, and innovate together

Search for product answers, tutorials, docs, and more



From architecture concepts to expert tutorials - find the information you need to set up and use Snowflake.

GET STARTED

1,427 questions

Newest

Active

Bountied **1**

Unanswered

More ▾

Filter

0

votes

1

answer

Snowflake stored procedures and transactions: unclear documentation?

The Snowflake docs (<https://docs.snowflake.com/en/sql-reference/stored-procedures-usage.html>) have some seemingly contradictory information about stored procedures and transactions: On the one hand: "...

transactions

snowflake-data-warehouse

16 views

2

votes

2

answers

Can I select several tables in the same WITH query?

I have a long query with a with structure. At the end of it, I'd like to output two tables. Is this possible? (The tables and queries are in snowflake SQL by the way.) The code looks like this: ...

sql

snowflake-data-warehouse

26 views

0

votes

0

answers

Why newly created database from Snowflake web console is not listing in snowsql client?

Please advice regarding below issue. I am new to snowflake and learning and doing hand-son. I created a new warehouse and database from snowflake web-console under account admin role. I am trying to ...

snowflake-data-warehouse

11 views

0

votes

1

answer

Snowflake - Getting a Count of Distinct Users While Using Window Frame or an Order

I am trying to write a query that gets the cumulative user count over the course of a month. WITH USERS_PER_DAY AS (SELECT DATE_TRUNC('day', HOUR_DIM.UTC) DAY , COUNT(DISTINCT CLIENT_SID) ...

sql

distinct

window-functions

snowflake-data-warehouse

17 views

Search for Answers

Stack Overflow has thousands of Snowflake questions and answers.

Use the community search and [Stack Overflow's Search](#) to find your answer quickly!

Title

Be specific and imagine you're asking a question to another person

This is a test question

Similar questions

2

answers

XSL Test Question, what is this testing?

I have this line: `<xsl:when test="document('foo.xml')/field_config/field_rename/field[@old_name = $name]/@new_name">`
`foo.xml: <field_config> <field_rename> <field old_name="Modified" new_name="modification"/> <field old_name="Created" ...`

asked Sep 23 '10 at 18:53 by [bmw0128](#)

4

answers

Java what is wrong with this interface

What is wrong with the following interface? This is a test question where you have to find the error. public interface
SomethingIsWrong { void aMethod(int aValue) { System.out.println("Hi Mom"); } }

asked Jan 13 '16 at 1:20 by [Barry](#)

Body

Include all the information someone would need to answer your question

B *I*

Hide formatting tips

[Links](#) [Images](#) [Styling/Headers](#) [Lists](#) [Blockquotes](#) [Code](#) [HTML](#) [More](#)

This is my question and my code.

`code` **bold** *italic* >quote

This is my question and my code.

Tags

Add up to 5 tags to describe what your question is about

[this](#) [is](#) [a](#) [tags](#)

Submit New Questions

1. Do a search to make sure your question hasn't already been answered!
2. Summarize the problem:
 - a. What's your goals?
 - b. What are the intended and actual results?
2. Describe what you've already tried.
3. Show your code!

More tips on how to ask a good question [here](#).



Get Answers!

Decide if the answer is helpful, and then...

Vote on it: Vote up answers that are helpful and well-researched, and vote down answers that are not. Other users will also vote on answers to your question.

Accept it: As the asker, you have a special privilege: you may accept the answer that you believe is the best solution to your problem.

More tips on what to do with answers [here](#).



USER GROUPS

A community of users where people get together to talk about a particular technology



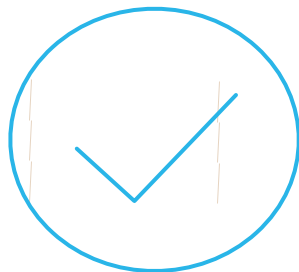
USER GROUPS

Join Your Local Chapter



Join your local chapter to be alerted when new meetings are published and receive newsletters from your Chapter Leader.

Register for Upcoming Meetings



Browse all upcoming user group meetings around the world. Sign up to attend one in your area.

Meet with Other Data Professionals



Get together to share best practices, check out new features, and learn from each other.



SNOWFLAKE COMMUNITY

Join our community of data professionals to learn, share, and innovate together

Search for product answers, tutorials, docs, and more



From architecture concepts to expert tutorials - find the information you need to set up and use Snowflake

GET STARTED

EXPLORE BY REGION

NORTH AMERICA

EUROPE

ASIA PACIFIC

LONDON, ENGLAND

United Kingdom 

MUNICH, BY

Germany 

STOCKHOLM

Sweden 

ZÜRICH, ZH

Switzerland 

Join Your Local Chapter

Join your local chapter to be alerted when new meetings are published, and receive updates from your Chapter Leader.

London



JOIN US





Register for Upcoming Meetings

Browse upcoming user group meetings around the world, or just those for your local chapter. Sign up to attend one in your area.

RSVP FOR THIS EVENT NOW!

VIRTUAL SNOWFLAKE USER GROUP - LONDON

Availability ends April 14th

RSVP



DOCUMENTATION

Blog posts, tutorials, and product documentation to help you get the most out of Snowflake.



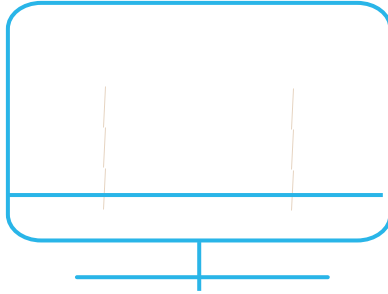
DOCUMENTATION

Getting Started



Documentation covering basic information and instructions for first-time users of Snowflake.

Videos & Tutorials



Comprehensive “how to” tutorials, as well as videos, for Snowflake users.

Release Notes



New features, enhancements, and fixes introduced in recent releases of Snowflake as well as those currently in preview.





Documentation

Access the latest product documentation to make the best out of Snowflake

[SEE DOCS »](#)



Getting Started

Before You Begin

Logging into Snowflake

Quick Tour of the Web Interface

Snowflake **Tutorials, Videos & Other Resources**

Useful Topics

Hands-on Lab

Getting Started Videos

Features **Release Notes**

What's New

Preview Features

Client Versions & Support Policy

Client Changes by Version

Previous Releases

Types of Documentation Available

Quickly locate detailed documentation on:

- Getting Started
- Tutorials & Videos
- Release Notes



Scroll to View the Latest Blog Posts and Tutorials

RECENT BLOGS

- 01 How to Capture Snowflake Users, Roles, and Grants Into a Table
- 02 Best Practices for Data Lifecycle Management Using Snowflake Cloning and Access Controls
- 03 Caching in Snowflake Data Warehouse
- 04 How to Use Active Directory Users and Groups for Snowflake User and Role Management
- 05 So You Want to Migrate to Snowflake - Part One
- 06 How to Migrate Stored Procedure to Snowflake Cloud Data Warehouse Using Python
- 07 Okta SSO with Snowflake - Part 4: Tableau Desktop
- 08 So You Want To Migrate To Snowflake – Part Two

SEE BLOG

TUTORIALS

- 01 How To: Submit a Support Case
- 02 How to Get Access to the Case Console
- 03 Pending Behavior Change Log
- 04 Getting Access to Snowflake University
- 05 How to Capture Snowflake Users, Roles, and Grants Into a Table
- 06 Common Community Login Issues
- 07 Best Practices for Data Lifecycle Management Using Snowflake Cloning and Access Controls
- 08 Caching in Snowflake Data Warehouse

SEE MORE



SUPPORT

Get assistance from Snowflake engineers if you encounter any issues, or have questions regarding Snowflake policies.





SNOWFLAKE COMMUNITY

Join our community of data professionals to learn, share, and innovate together

Search for product answers, tutorials, docs, and more



From architecture concepts to expert tutorials – find the information you need to set up and use Snowflake

GET STARTED

The screenshot shows a 'New Case' form with the following fields and options:

- Subject ***: A text input field.
- Severity ***: A dropdown menu.
- Description ***: A larger text input field.
- Category ***: A dropdown menu.
- Snowflake Account Name ***: A dropdown menu.
- Sub Category ***: A dropdown menu with 'None' selected.

At the bottom of the form are two buttons: **CANCEL** and **SUBMIT**.

File a Support Ticket

Step 1. Please indicate whether you are a Snowflake customer or a 30-day trial user.

Step 2. Please confirm the username and email shown in this step are correct. Then provide the Account Name, Region, Cloud and click 'Next'

Step 3. Click 'Finish'. The page that appears confirms that your request was successfully submitted.



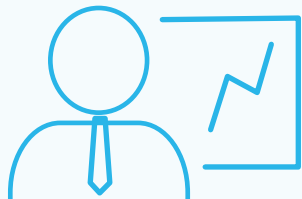
EDUCATION & TRAINING

*Join our instructor-led, virtual hands-on labs or get SnowPro certified
and stand out in the data community.*



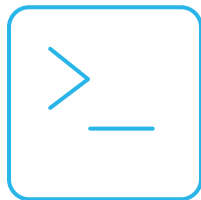
EDUCATION & TRAINING

Demos



Watch a weekly demo where product experts will showcase key Snowflake features and answer questions.

Hands-on Labs



Join our instructor-led, virtual hands-on labs to get the in-depth technical information you need to get started with Snowflake.

Certification



Become a SnowPro and stand out in the data community with the digital proof





Do Hands-On Labs

Join our instructor-led, virtual hands-on labs to get the in-depth technical information you need to get started and keep moving forward with Snowflake.



Get Certified

Become a SnowPro and stand out in the data community with the digital proof



Watch Live Demos

Watch a weekly demo where product experts will showcase key Snowflake features and answer questions.



Talk to Customers

What better way to learn about Snowflake than to talk to those who use it every day? Join a live case study and Q&A session with a Snowflake customer.



Questions about the Snowflake Community?
Please drop us a line!

community@snowflake.com





THANK YOU

