

A photograph of three business professionals (two women and one man) sitting around a table in a meeting, smiling and gesturing. The image is overlaid with a blue tint. The text "Data for Breakfast" is written in a white, cursive script across the center of the image.

# Data for Breakfast



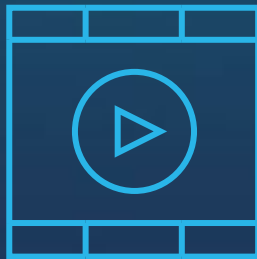
# WELCOME

Sign up for your  
Snowflake free trial  
(Enterprise edition)

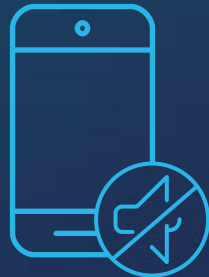


<https://trial.snowflake.com>

Slide deck will be  
made available



Cell phones  
on silent



# AGENDA

<b>Breaking Data Barriers</b>	20 mins
<b>Technical Deep Dive</b>	25 mins
<b>Customer Session</b>	25 mins
<b>Q&amp;A With Speakers</b>	25 mins
<b>Zero to Snowflake Workshop</b>	90 mins



# ***BREAKING DATA BARRIERS***



# SNOWFLAKE

## SQL DATA WAREHOUSE BUILT FOR THE CLOUD

**3 years**  
in development

**2,500**  
customers,  
adding 500  
a quarter

Growing  
consistently  
**3x** globally

Replacing  
legacy & first  
gen cloud alike

Gartner and  
Forrester  
“Leader”



# OUR MISSION



**ENABLE EVERY ORGANIZATION  
TO BE DATA-DRIVEN**



# CURRENT DATA WAREHOUSE PROBLEMS



# SILOED, DIVERSE DATA



**Many data sources / stores**

**Semi-structured data**

**No single source of truth**

**Cannot easily share**





# SCALE AND SPEED ISSUES



**Cannot easily scale up/out**

**Resource contention**

**Slow queries and ingest**



# COMPLEX, COSTLY INFRASTRUCTURE



**Costly software & hardware**

**Over-provisioned for spikes**

**Lots of maintenance & tuning**

**Many languages**



# LEADS TO SLOW, LIMITED DECISION MAKING



**Cannot easily scale up/out**

**Resource contention**

**Slow queries and ingest**



# THE SOLUTION:



# ALL DATA CENTRALIZED AND SHAREABLE



**All in one place, incl semi-structured data**

**Single source of truth**

**Securely share live data with others**



# UNLIMITED, AUTOMATIC SCALE AND SPEED



**Separation of storage and compute**

**All workloads get proper, isolated resources**

**Automatically handles spikes**



# SIMPLE, COST EFFECTIVE INFRASTRUCTURE



**No hardware**

**Fast time to value**

**Near-zero maintenance**

**Pay as you use**

**Complete SQL**



# LEADS TO FASTER, BETTER DECISION MAKING



**Unlimited queries & users**

**Fresh & complete data**

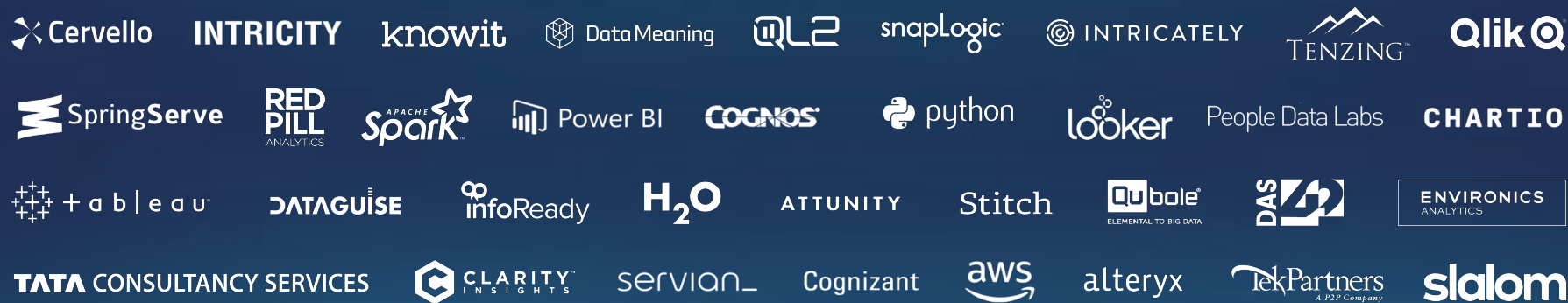
**Optimize revenue & costs**







# EVER EXPANDING ECOSYSTEM



# SNOWFLAKE USE CASES



Cloud Data  
Warehouse



Data  
Lake



Accelerated  
Analytics



Data  
Engineering



Secure  
Data Sharing

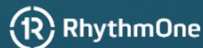
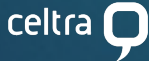


Data  
Applications



Data  
Science





# OVER 2,500 SUCCESSFUL CUSTOMERS



**More users,  
faster analytics**

No more concurrency /  
contention issues;  
timely analytics  
for 10+ LOBs



**Larger workloads  
and data sets**

Easily bring in more user  
workloads and data sets  
while exceeding scale and  
performance requirements



**More queries,  
better analysis**

Can do 100 times more  
queries per day for  
quicker, better analysis



**Faster, scalable  
analytic app**

Delivered new analytic  
application to 10,000+  
pharmacies with query  
performance improved 150x



# TECHNICAL DEEP DIVE



# HOW IS SNOWFLAKE UNIQUE?

# ARCHITECTURE



# A NEW ARCHITECTURE FOR DATA WAREHOUSING

Multi-cluster, shared data, in the cloud

## Traditional Architectures



### Shared-disk

Additional capacity requires forklift upgrade

Reads/Writes at the same time cripples the system

Replication requires additional hardware



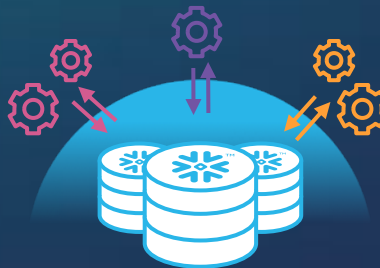
### Shared-nothing

Resizing cluster requires redistributing data. Shut down requires unloading.

Each cluster requires its own copy of data (ex: test/dev, HA)

Vacuuming processes needed to maintain sort and distribution for performance

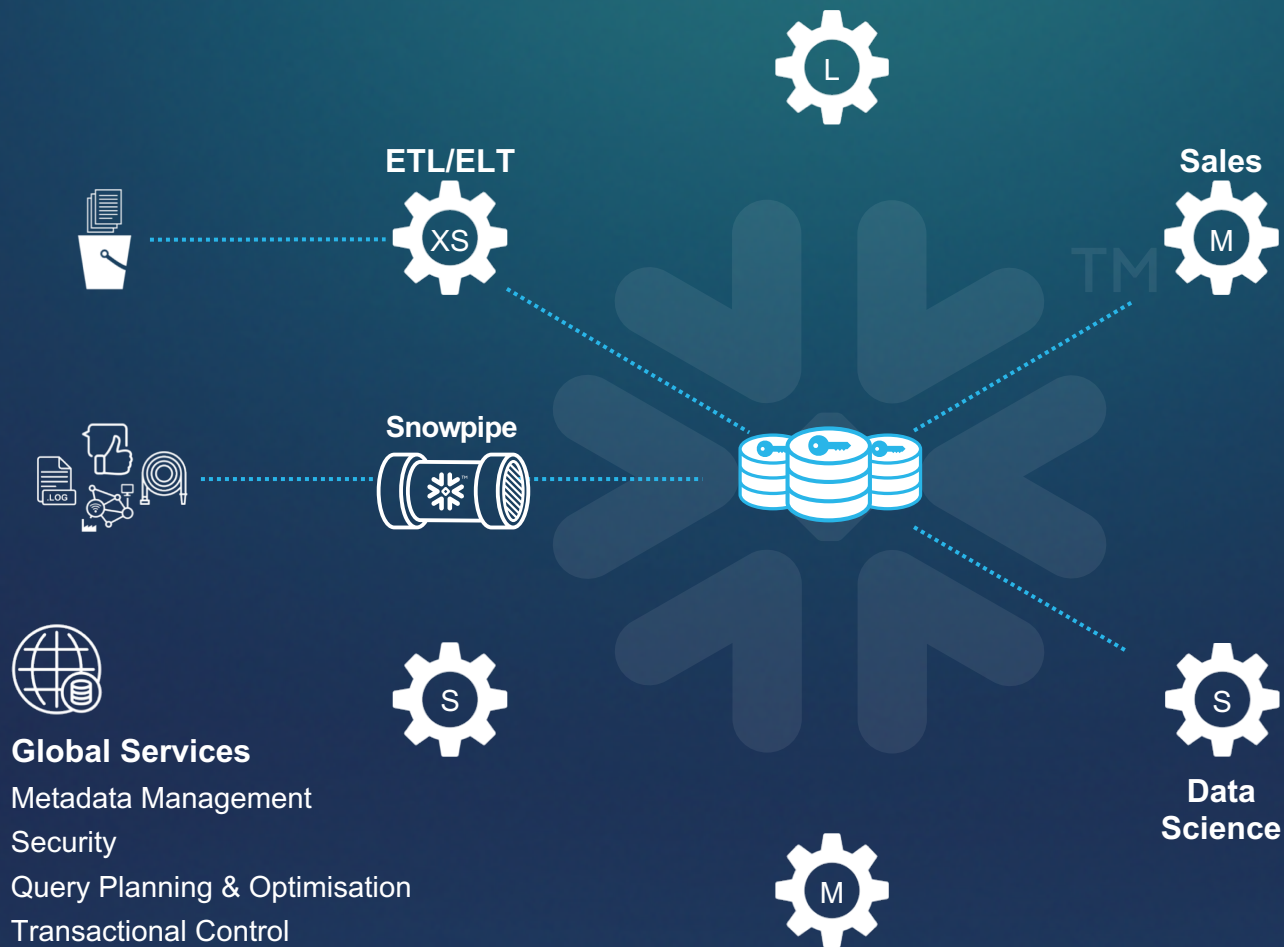
## Snowflake

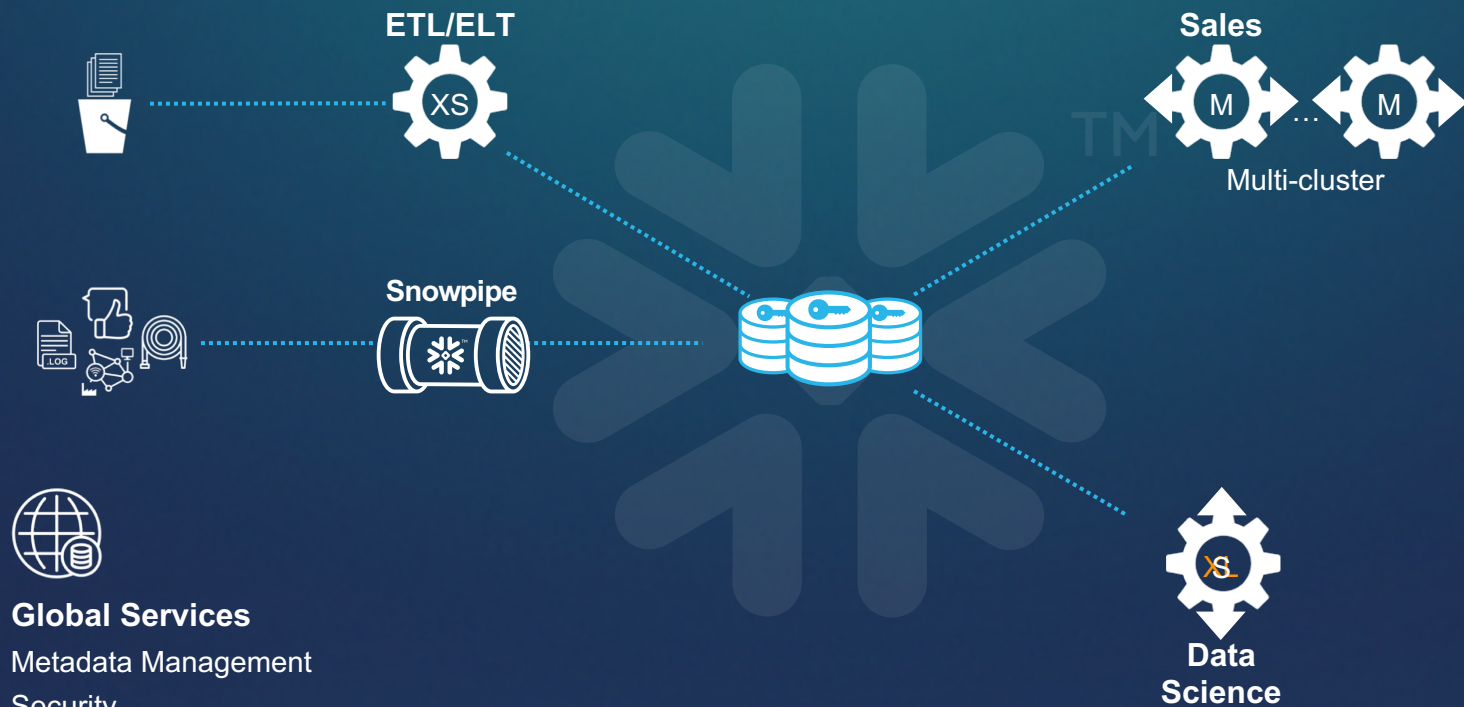


### Multi-cluster, shared data

- Centralized, scale-out storage that expands and contracts automatically
- Independent compute clusters can read/write at the same time and resize instantly
- Automated backup across multiple availability zones/regions
- AWS, Azure, GCP







## Global Services

Metadata Management

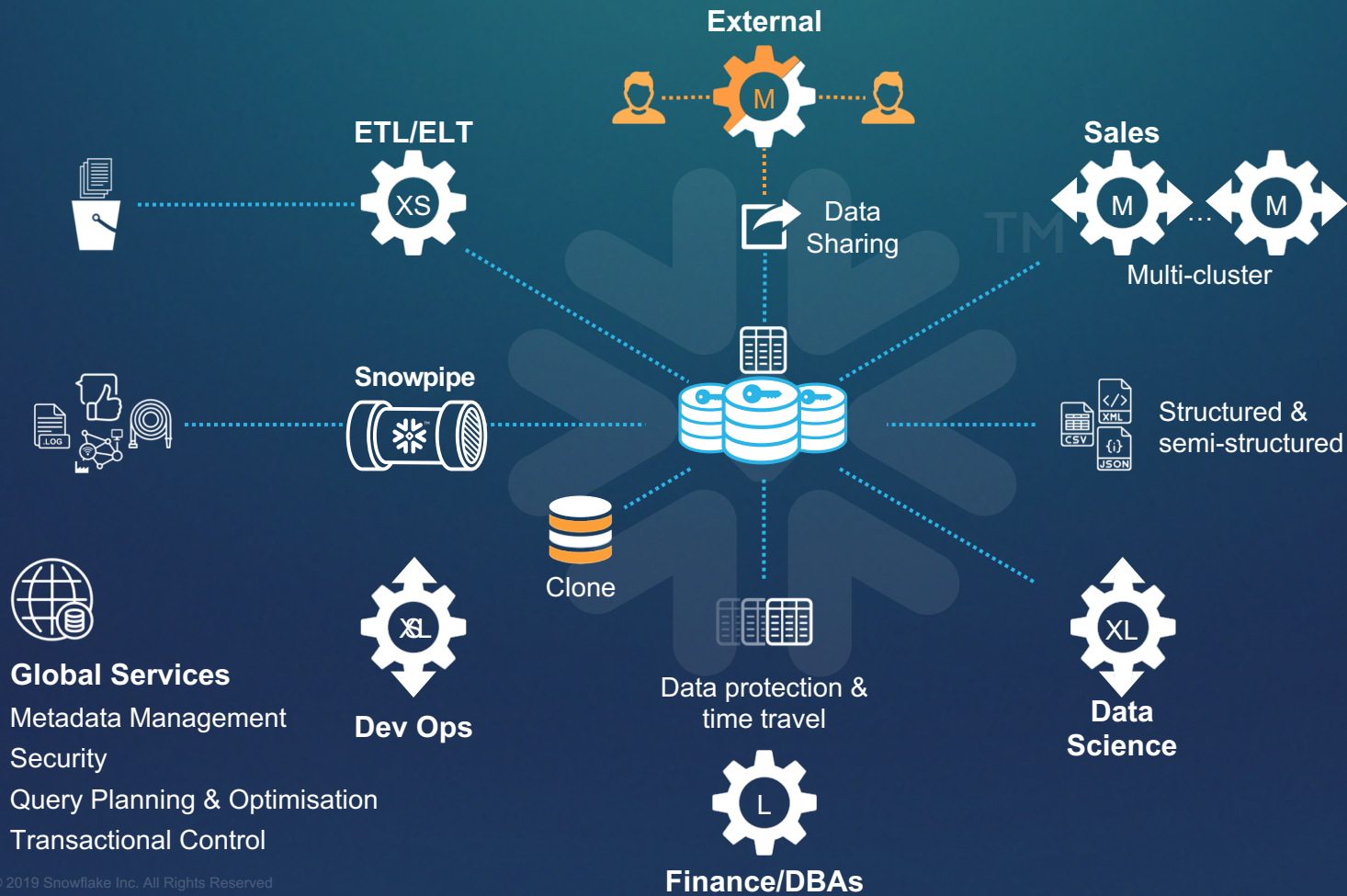
Security

Query Planning & Optimisation

Transactional Control







# SECURE BY DESIGN, DATA AVAILABILITY

## Authentication



- Embedded multi-factor authentication
- Key Pair authentication
- Federated authentication / SSO supported

## Access control



- IP whitelisting
- Roles-based access control model
- Granular privileges on all objects & actions

## Data encryption



- All data encrypted, always, end-to-end
- Encryption keys managed automatically

## External validation



- Certified against enterprise-class requirements
- PCI and HIPAA available

## Data availability



- User error: Time Travel, Failsafe, Cloning
- Zone failure: Data replicated to multiple zones in a region
- Region/Provider failure: Data replication & failover



# MORE ON USE CASES



Data Lake



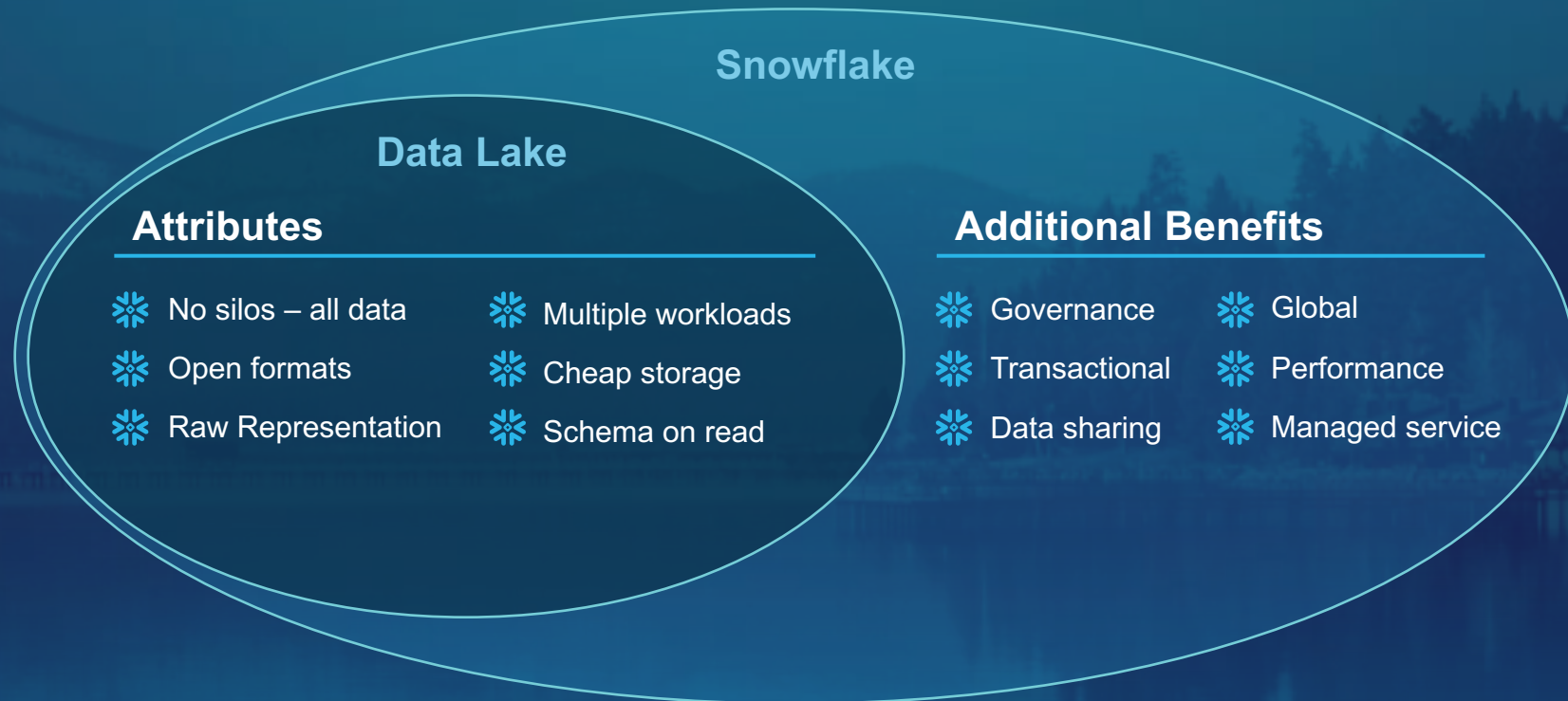
Data  
Engineering



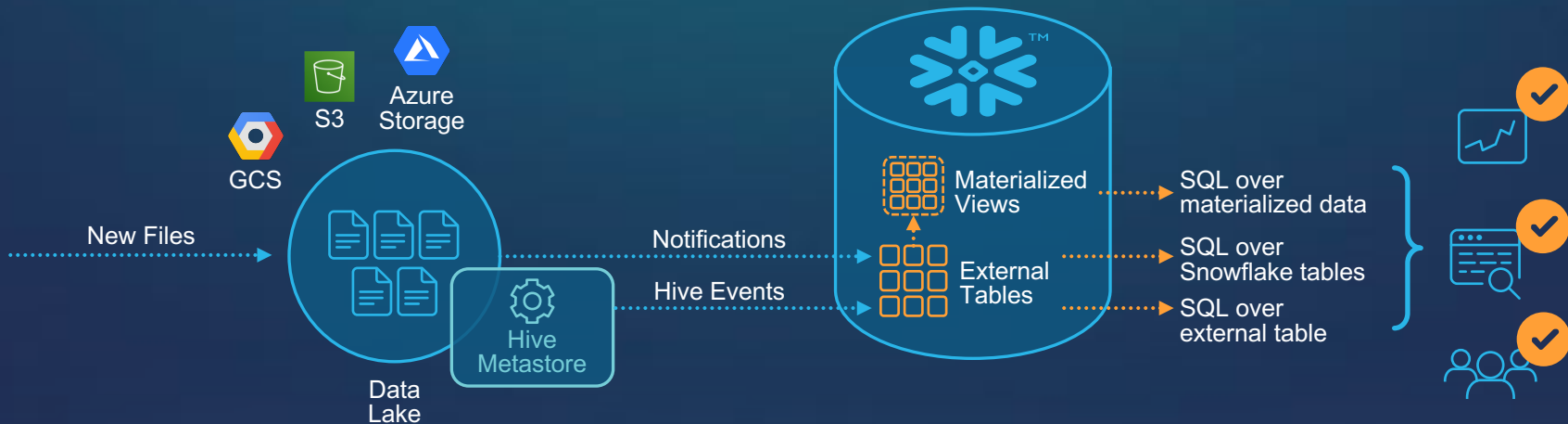
Secure Data  
Sharing



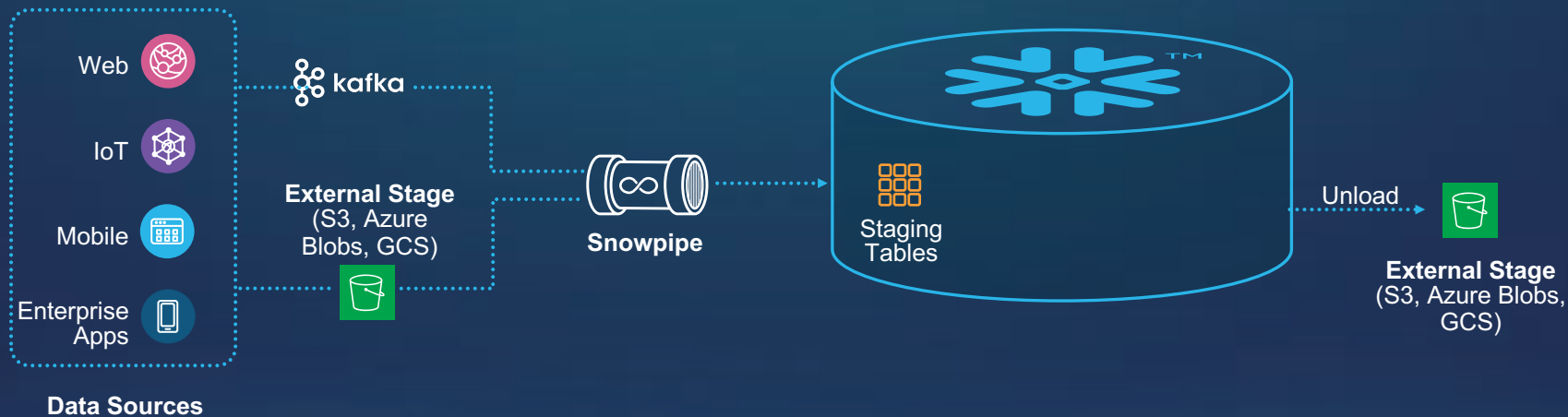
# HOW IS A SCALABLE DATA WAREHOUSE DIFFERENT FROM A DATA LAKE?



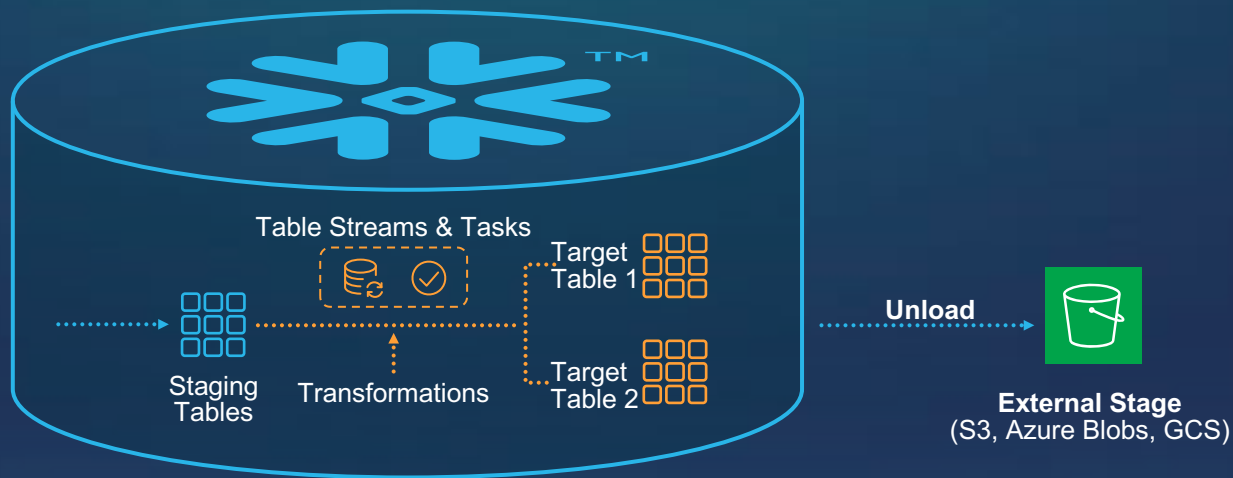
# AUGMENTING EXISTING DATA LAKES



# LOW LATENCY INGEST



# SCALABLE TRANSACTIONAL TRANSFORMATIONS



# SECURE DATA SHARING

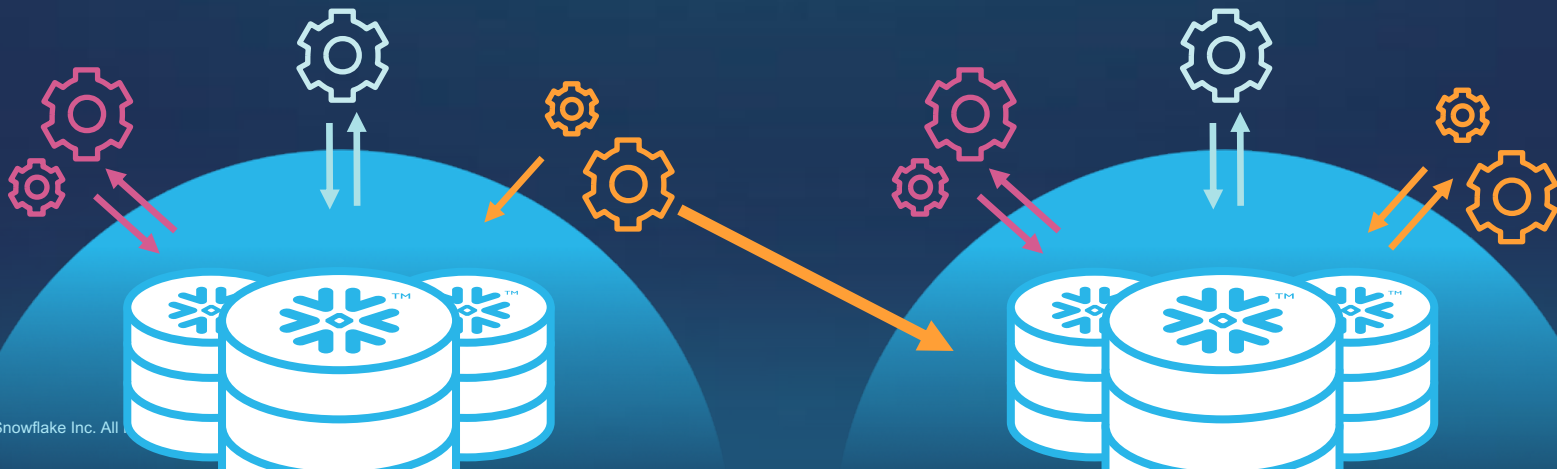
Secure

Live

Frictionless

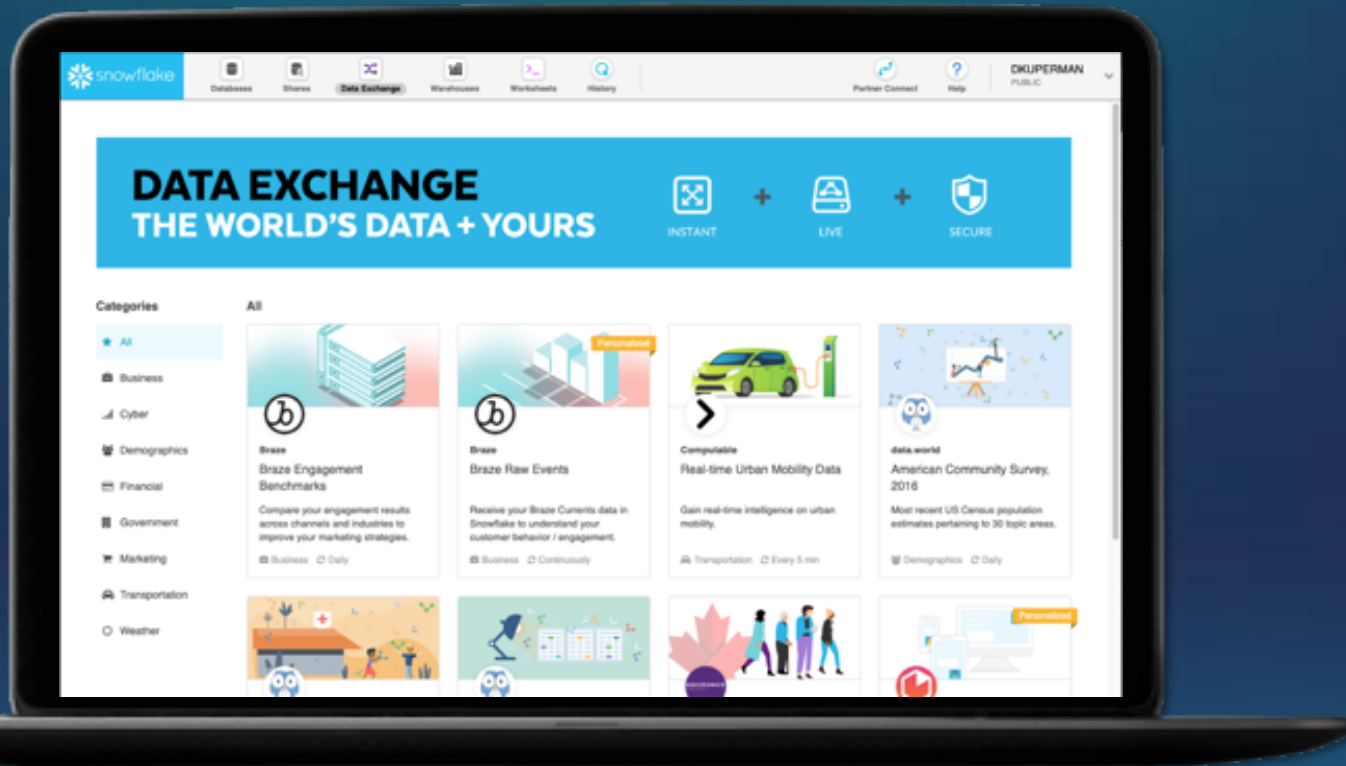
Personalized

Global

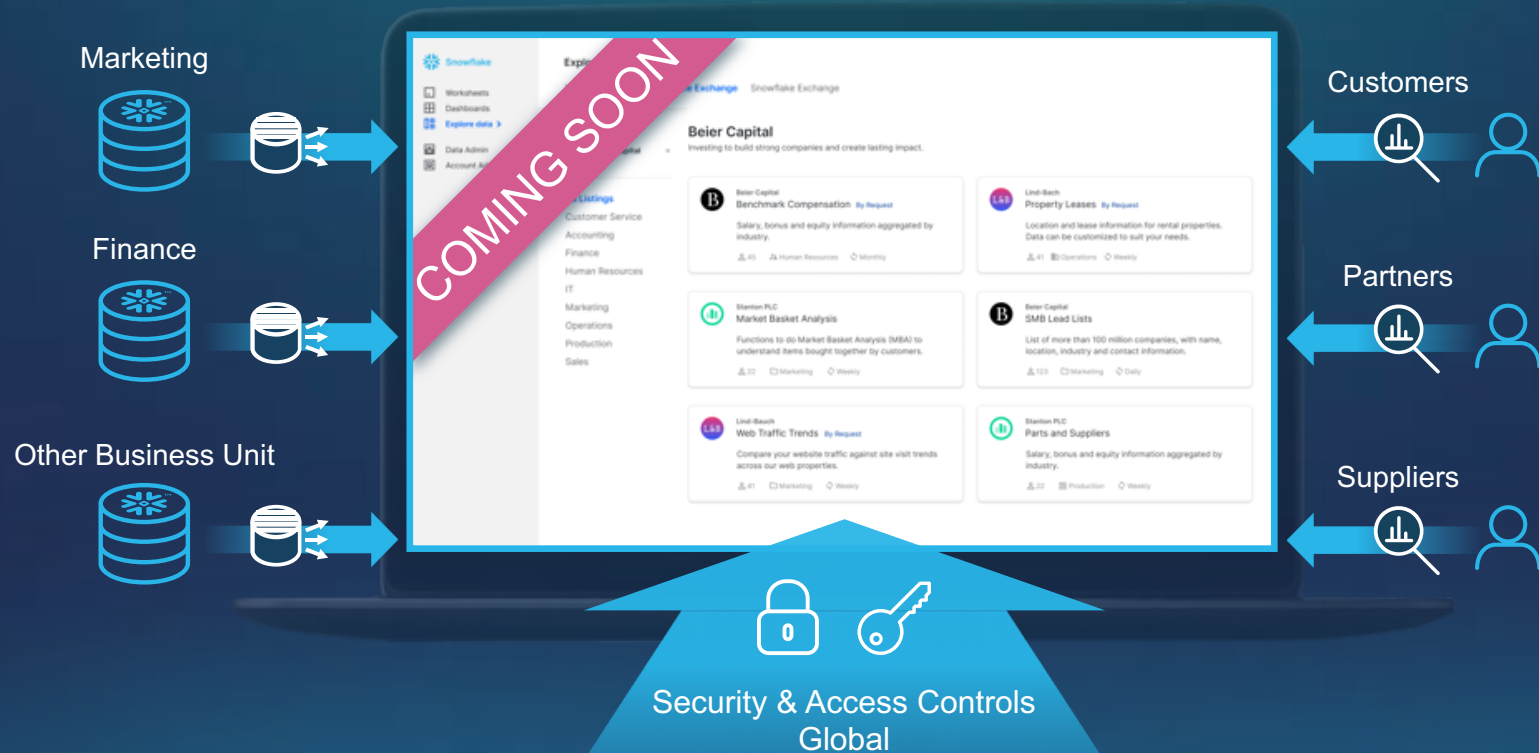




# PUBLIC DATA EXCHANGE



# THE PRIVATE DATA EXCHANGE



# THANK YOU

*Data for Breakfast*

